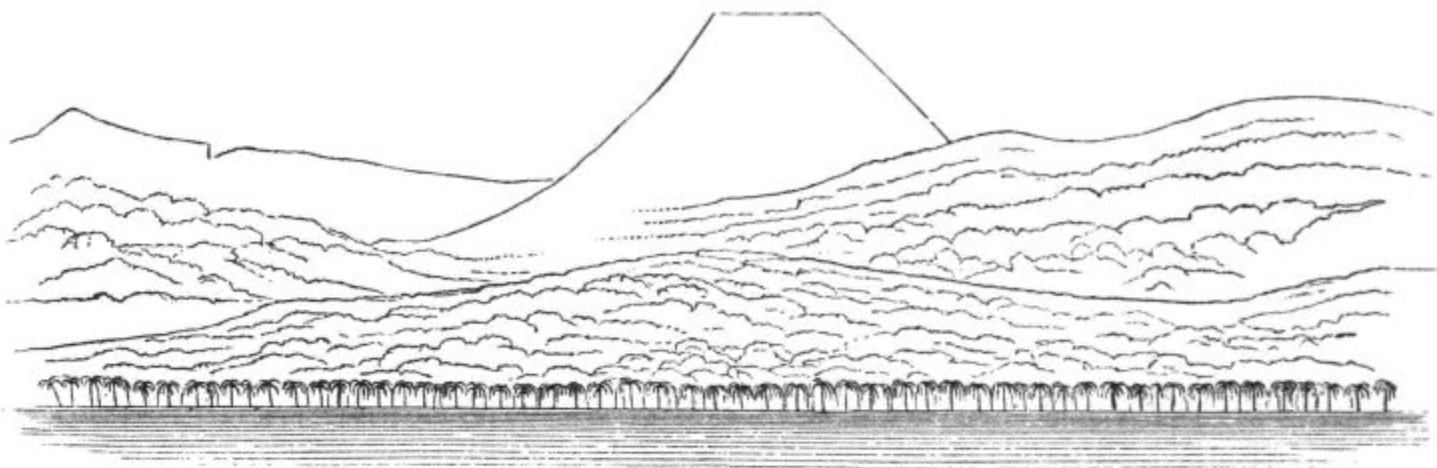


main range of the island, and, with one exception, they form very low elevations upon its outline. The excepted one, near Fasetootai, runs up into a high cone, and is called Tafua. (See sketch, page 319.) Of the other craters, the one back of Sangana, and another back of Apia, called Lanu-to'o, are most distinct. Between the first two, the outline of three prominences may be distinguished in the view from the sea, which may possibly be other craters, and two others are seen between the latter two. Tafua forms the western extremity of the main ridge of Upolu, and is the source of the rock and soil that constitute this portion of the island. Below it there are one or two small craters, which are properly subordinate to Tafua.

The overflowings from this line of craters, which extend twenty miles in a direction east-by-south and west-by-north, have produced the long slopes of the mountain in this district. Tafua is the only crater which appears to have been much elevated by cinder eruptions.

Tafua, viewed from the northward and westward, is a truncated cone, of regular form, rising abruptly out of the main ridge of the island, which is here not more than half its usual height. I found its



altitude, by barometrical measurement, to be 2136 feet, while the main ridge to the westward of the peak is 1170 feet high. Viewing it from the northward, where the following portion of the main ridge to the *east* becomes visible, the cone is observed to be lengthened in this direction, and then rapidly declines again, as seen at *d* on the following sketch. Leaving Fasetootai for the crater, we travelled inland for three miles over a gently rising plain, following a path through the forests which led us to the foot of the ridge a little to the west of the cone. The declivity now gradually increased in abruptness, till the path became a steep flight of steps; yet the surface was so covered with soil that the rocks were rarely visible. Having ascended the ridge, we left the path that crosses it, struck along the