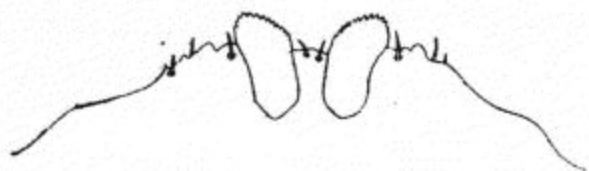
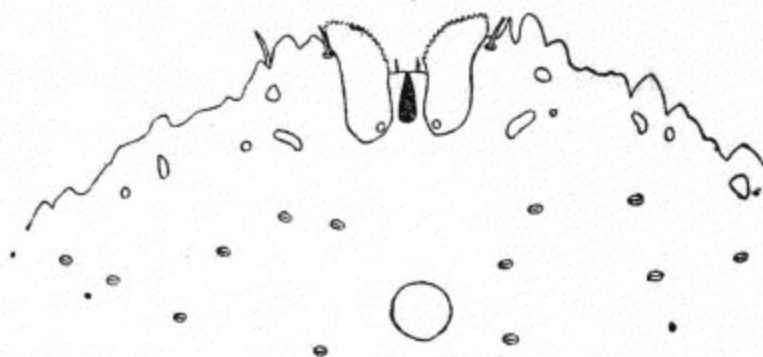


The specimens were collected as the train stopped at different points on the Mexican Central Railway.



Diaspis townsendi, Ckll. From Silao.



Diaspis townsendi, Ckll. From Jalisco.



Diaspis townsendi, Ckll. From Silao.

Belongs to a little group consisting of *D. townsendi*, Ckll., *D. toumeyi*, Ckll., and *D. fagrææ*, Green, between *Diaspis* and *Aulacaspis*. The female resembles *Aulacaspis*, but the male scale is as in *Diaspis*.

The species is very variable; the Silao form is to be considered the type.

AULACASPIS, Ckll.

1. *Aulacaspis miranda*.

Aulacaspis miranda, Ckll. Ann. & Mag. Nat. Hist., June 1898, p. 437.

Hab. MEXICO: Cuautla and Orizaba (*Koebele*).

2. *Aulacaspis rosæ*.

Diaspis rosæ, Sign. Essai sur les Cochenilles, p. 123 (1869).

Hab. MEXICO: Chihuahua (*Townsend*).

This species was originally described by Sandberg in 1784, but was first named by Bouché.

3. *Aulacaspis boisduvali*.

Diaspis boisduvalii, Sign. Essai sur les Cochenilles, p. 114 (1869).

Hab. MEXICO: Alta Mira in Tamaulipas (*Townsend*); El Cuyo del Chico Sapote in Tabasco (*Townsend*). Var. *tentaculata* (Morgan), on "pitahaya" (a cactus) at Frontera, June 5, 1897 (*Townsend*).

4. *Aulacaspis bromeliæ*.

Diaspis bromeliæ, Sign. Essai sur les Cochenilles, p. 116 (1869).

Hab. MEXICO: Tlacotalpam, April 21, 1898, on *Bromelia pinguin* (*Townsend*).